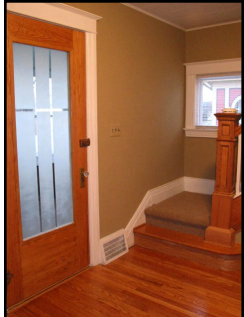


Recent Projects.



Interior remodel



Masonry & Pergola



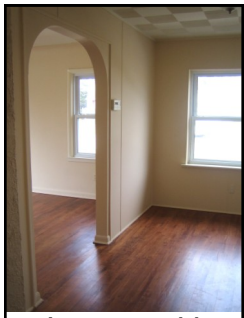
Interior remodel



Bathroom Addition



Custom Interior Trim



Interior remodel



Green-built cabinetry

New Harvest Homes Inc.  
Ferndale, MI 48220

Contact: Lance Bowen  
Phone: 248 990 2943

E-mail: lancebowen@newharvesthomes.com



Green Building



Barrier Free Design

New Harvest Homes Inc.  
Ferndale, MI 48220  
Phone: 248 990 2943



## About us

New Harvest Homes is a full service company offering construction services from conceptual design through the completed project with a focus on "Green Building" and "Barrier Free" Solutions. Projects include: new construction, interior and exterior remodeling, and custom woodworking and furniture.

### Services Offered

#### Design:

- Facilitate a design process that discovers the client's needs and desires, and turns them into a completed design using creative, affordable, beautiful, and healthy solutions.
- Develop a comprehensive cost budget for the project that considers the "up-front" construction costs balanced against the long term costs to run and maintain the structure.

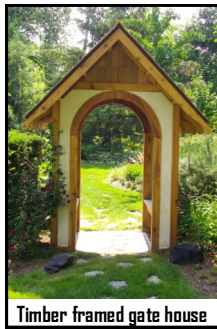


"Green Basement"

- Manage Architectural and Engineer professionals as needed, and integrate their work into the final design.

#### Construction Management and General Contracting:

- Develop and implement a construction schedule that delivers a quality project in a timely manner.
- Negotiate the best possible terms with all suppliers and subcontractors.
- Apply for all required municipal permits.
- Direct management of all day to day activities of the project including; subcontractors, suppliers, building department inspections, quality control, and contract administration.
- Schedule regular progress meetings with the client.



Timber framed gate house

## Specialties.

### Hands on Craftsmanship:

- Custom woodworking including furniture and cabinetry. Built with sustainably harvested materials, and finished with natural/ nontoxic finishes.
- Natural building techniques including: Straw bale construction, and earthen and lime plasters.



Natural built Class room



Recycled material Bath

## Green Home Inspections .

Most existing Buildings standing today can be simply and affordably modified to reduce energy bills or improve the quality of the air inside.

Our comprehensive "Green Home Inspection" identifies those things within your home that could be: altered, replaced, or repaired to achieve a higher level of energy efficiency, occupant comfort, and improved Indoor air quality.

We perform a top to bottom inspection of your home inside and out, and provide to you a detailed report identifying those things that are substandard or under-performing, as well as "Green" recommendations on how to remedy the conditions.



Simple basement winterization

## Barrier Free Design

New Harvest Homes is a design/ build Construction Company, which focuses on "Barrier Free Design" projects that help to create a safe and accessible environment for people with mobility challenges.

We consult with families and primary care providers to identify solutions to access and safety issues experienced in the home then quickly modify the home with great attention to quality, affordability, and expedience. From a simple grab bar installation or access ramp to a "complete access" home remodel, New Harvest Homes is a full service company. One of our primary goals is to help our clients maintain a dignified quality of life inside their home as long as possible.



ADA stairway in Garage

- Entrance ramps
- Minimal height door thresholds
- Grab bars
- Easy access showers
- Easy-use door hardware
- Extra wide door openings